



Newsletter

We're dedicated to keeping Charleston Lake beautiful in every way!

Vol. 105, No. 2

Spring, 2005

A message to the President

"All of my favourite memories of growing up revolve around Charleston Lake. Activities on the lake were always an adventure, whether we were fishing, swimming, canoeing, boating, camping or tanning! I have learned many important life skills as a result of my time on the lake, including patience, balance and organization.

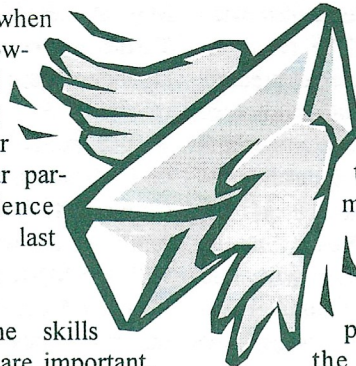
One needs patience when fishing – those that don't have patience feed the sun fish little bits of bread, then catch them using a net (this is not recommended). Balance is important when paddling a canoe, but don't get into a water fight, because once there's water in the canoe, it is much easier to tip. Organization is essential when deciding which one of your friends you should pick up first when heading over to Tallow Rock.

The lake provides a great deal of freedom to young teens. I remember driving the 9.9 over to a friend's house, and going out in the pedal boat or canoe without parents. There was always some excitement to be had, whether it was camping, hanging out with friends, or jumping off of a neighbour's boat house. I feel I will always have a common bond with all my "lake" friends, and the friendships

we created when we were growing up and discovering ourselves, our lake, and our parent's patience level, will last forever.

Although the skills listed above are important, I think one of the most important things I learned while growing up on Charleston was to respect nature. I am concerned about keeping the lake clean and healthy for future generations. I hope some day when I have children that they will be able to enjoy the lake as much as I did. Already you can see the changes that have occurred as a result of the zebra mussels. Let's help stop other harmful changes from happening to the lake we all love.

The things that can aid in keeping the lake clean are easy to do, such as using eco-friendly cleaning products that are biodegradable and free of harmful chemicals, buying cleaner 4-stroke engines, and being careful when fuelling up. I know that in my grandparents era people used to throw garbage into the lake (there's an old fridge at the bottom of the lake out in front of our cottage). I think we know better now.



The lake isn't supposed to be an ash tray for cigarettes, nor a beer bottle return, and it would make a difference if people stopped treating it as a garbage disposal. I know in the Association's office there is loads of information on creating and maintaining a healthy shoreline at your property. Please inquire about what you can do to help make your lakefront more environmentally friendly, it's not that hard to do.

Finally, another concern from the "younger generation" is that the lake lacks a sense of community. I hear stories from my mother/aunts/uncles/friend's parents about the

Charleston Lake Regattas, boat races, water-ski clubs, etc., and I wish there were more lake-specific community events for families, youth, teens, retirees, and me! I know the family fun day was cancelled last year due to lack of participation. I think this and other events are exactly what the lake needs. It's hard to meet people on the lake, and what is a week's vacation if you can't spend it with friends? Community events are also a great way to inspire people to help keep the lake clean. We are all responsible for Charleston Lake's future. Let's continue creating fond memories that will last for our lifetimes, and many more to come."

*Thank you,
Amy Gaines*

Inside this issue

President's message	2
Athens Celebrates	3
Septic systems	4
Phosphates	5
The outlet	6
Gananoque Watershed	8
Property tax issue	9
On the world stage	10
AGM Notice	12

The Board reports...

President's Message

Dear Members:

Greetings from Charleston Lake as we prepare for Summer 2005. The lake wintered well and following a week of sunny warm weather, the ice simply disappeared on April 14th.

What's new this year? The first annual Canada Day celebrations will be held in Athens on the July long weekend. Mark your calendar to attend this event. Also congratulations to the Charleston Lake Provincial Park who this year are celebrating their 30th Anniversary. Make this the summer to visit the park and enjoy the many activities and programs the park has to offer.

For the first time in its history Charleston Lake has its own section in the Official Plan for the Township Leeds and the Thousand Islands. The section states in part: The Charleston Lake Association and the Charleston Lake Environmental Association have embarked upon a multi-year

lake capacity study which is anticipated to be completed in 2005. An amendment to this Official Plan will be considered when the study has been completed to incorporate the study results. Until then, the approval of new waterfront lots will be discouraged. As an interim measure, new waterfront lots will be required to have a minimum lot area of 2.5 acres and a minimum water of water frontage of 259.3 feet. This interim policy will expire at the end of 2006 if the Official Plan is not amended before that date. Over this coming summer we intend to hold discussions with the Council of the Township Of Athens requesting that they update their Official Plan.

Our increasingly popular Swimming Lesson and Environmental Youth Day Camp programs will again take place this year. For details please refer to the information sheet included with this newsletter.

This Summer please make every effort to protect and

preserve Charleston's turtles. It appears that the Turtle populations are on the decline, and a suspected major cause is turtles being killed crossing roads and highways. Please be mindful of Turtles crossing roadways around Charleston Lake, especially in May and June when female Turtles are crossing roads to lay their eggs.

This Summer, the spot light will be once again on Charleston's Lake Trout. Currently we are working closely with the MNR to introduce a lake trout Creel Survey during this years trout angling season. A creel survey provides a wide variety of valuable information on trout populations, angling pressure etc. We also consider preservation of the lakes Bass fishery a Priority One. Accordingly, as part of Trout Creel Survey, a patrol of the bass spawning beds will take place with educational material provided to anglers found fishing on the spawning beds in May and June.

Water Quality and the overall environment will continue to be a priority one.

Preparation of the Lake Management Plan remains on schedule. The Water Quality testing program will continue this year as will the Healthy Shoreline Review program

With so much happening at the lake these days it is very easy to forget the past. In our last newsletter we took a step

back in time and introduced you to Joe Kelsey, the grand old man of Charleston Village. In this issue we journey to the very important south end of the lake and look at the history of the Outlet and the Outlet dam.

Please plan to attend the Annual General Meeting on Saturday July 9th. Details are provided on page 12 of this newsletter.

The Directors join with me in wishing you and your family a happy, healthy and safe Summer 2005 at the lake.

Don Curry



Newsletter

This newsletter is published regularly by the Charleston Lake Association for its members and those persons interested in Charleston Lake. Comments and/or submissions are welcome, and should be forwarded to The Secretary, Charleston Lake Association, P. O. Box 609, Athens, Ont., K0E 1B0.

Newsletter Co-ordinator:

Don Curry, Box 399,
Athens, Ont. K0E 1B0

Production and Design:

Herb Buehler,
Rideau Valley Marketing
4 Argyle Dr., Perth, ON K7H 3G9
Tel: 613-326-0106

E-mail: ashwoods@rideau.net
Website: www.ashwoods.info

**For Membership
Information,
Call 613-924-2809**

While the Association makes every effort to ensure the accuracy of information contained in this newsletter, it cannot accept responsibility for errors and omissions. Readers are urged to obtain professional advice before acting on the basis of the material contained in this newsletter.

Don't Forget the AGM

*Please see notice on page 12,
mark your calendar
and plan to attend.*

*Participate in discussion on
important Lake issues.*

Athens Celebrates Canada!

This year, there's a new way to celebrate Canada Day! The Athens District Chamber of Commerce is planning a community celebration which will have a uniquely Athenian flavour. The planned extravaganza will mark the 60th anniversary of the end of the Second World War and the 40th anniversary of the Canadian flag, and will also honour Athens' community volunteers at the first-ever Athens Volunteer Appreciation Barbecue.

On July 1, Main Street's hanging baskets will overflow with red and white flowers and Canadian flag banners will fly. Storefronts will be decorated for the occasion. Everyone will be asked to dress in our national colours.

During the afternoon, there will be a family scavenger hunt, face-painting, storytelling and children's crafts. A clown will hand out Canadian flags and red and white balloons to children. At the new museum in the Municipal building, the Athens Area Heritage Society will stage an exhibit featuring life in Athens during the Second World War, the contribution of Athens' "boys who went to war" and the local war effort.

It is planned to begin the formal celebration at 4 p.m., with a parade to the War Memorial to raise the Canadian flag, the singing of "O Canada" by a special Canada Day

choir, and a march-past to honour our Athens' World War II veterans.

A Community Appreciation Barbecue in honour of Athens' volunteers will follow in Memorial Park. A huge birthday cake will provide free dessert for all. The "Athens Citizen of the Year" award will be presented, and entertainment will include music of the Forties and a sing-along featuring songs popular during the War Years.

As the final event of the day, a family-oriented street dance is being planned on Henry

Street, to the music of Gypsy Moon. Brockville Square Dancers are offering a demonstration, with an opportunity for novices to "swing their partners". The celebration will conclude in time for families and friends to hold their own Canada Day parties, back at the Lake.

The final schedule depends on the awarding of a grant by Heritage Canada and details are still subject to change, but the Municipality and businesses and organizations, including the Charleston Lake Association, are also assisting with costs of the event. The Chamber of Com-

merce appreciates the help of your Association in making this celebration possible and extends a special invitation to cottagers and Lake residents. We hope that you will include this celebration in your plans for the holiday weekend.

Help make Athens the best place to celebrate Canada on July 1!

*Jean Brassington,
Director,
Athens District
Chamber of Commerce*

A generous donation

As a Director of CLEA, I am delighted to gratefully acknowledge the generous donation of land by Peggy and Doug Hale for the use of CLEA for the information Centre and offices.

This permanent donation gives CLEA a permanent location from which to share the information, hold the meetings and spread the word about the environmental goals we all share for Charleston Lake.

This is one more example of the selfless leadership and endless giving that has typified Doug and Peggy Hales commitment to the Charleston Lake community for decades. The two of them define the true meaning of citizenship, generosity and common cause.

On behalf of CLEA, and all the families and present and future generations who will benefit from its work, I am honoured to express our profound gratitude to Doug and Peggy Hale for this outstanding contribution.

*Hugh Segal
Green Island, Webster Bay
Member, CLEA Board*

Around the lake...

Re-inspection of Septic systems

The Township of Leeds and the Thousand Islands is launching a septic re-inspection program this summer in cooperation with the Lanark Leeds and Grenville Public Health Unit.

A health unit inspector will this year be visiting 180 properties on the north shore of Charleston Lake located on Slack Road.

"Council introduced the pro-

gram this year with an aim toward creating an up-to-date inventory of sewage systems around the numerous lakes and rivers within our boundaries. The lakeshores and the surrounding environments are

part of our natural heritage, which council is anxious to protect and promote," said TLTI Director of Planning and Development Julie Salter-Keene.

Before proceeding with an onsite inspection the health unit is asking property owners to complete a survey of details about the system including construction details, pump out dates, and any problems encountered with the system.

An inspector from the public health unit will be completing a visual surface inspection of the system to determine any visual signs of deterioration and will measure the distance of the system from the high water mark. Property owners' presence during the inspection is encouraged.

As a final step findings of the visual inspection will be reported to the property owners. Property owners will be required to take the necessary steps to render the sewage system safe.

"Historically, where a municipality has undertaken a re-inspection program, approximately 90 per cent of the systems inspected were deemed to be fine, with no remedial work required," said Salter-Keene.

*This article appeared in
The Review Mirror
on May 5th, 2005
and is reprinted
with permission.*

Blue Green Algae

"Cottagers damaging Outaouais Lakes at an alarming rate, Quebec warns" is a quote from the Ottawa Citizen (November 2004).

This article cites septic tank runoff, use of detergent and lawn fertilizers as major contributors to nutrient loading of the various lakes.

One of the negative results of this process is heavy algal growth one of which is blue green algae (pond scum). Some forms of this blue green algae are toxic to fish, animals, and people especially children who come in contact

with it during algal blooms. A wake up call for Charleston Lake occurred in June 2000 when the MOE responding to a water quality complaint discovered a blue green algal bloom in Charleston Harbour. Two of the types of blue green algae that are potentially toxic were also found. This was a temporary bloom and disappeared about a week later.

Reg Genge from Ontario Lake Assessments says likely sources of blue green blooms include

- shoreline deterioration
- septic tank runoff
- lawn fertilizers, and
- agricultural runoff.

This is a concern for all who want to maintain a healthy Charleston Lake and your association is working hard to deal with these issues with programs such as Healthy Shorelines, and working with various users of Charleston Lake to help reduce runoff into our lake. We all need to be part of the commitment to keep Charleston Lake Beautiful.

Flyers with this newsletter

Take a look at the flyers included with this newsletter:

Golf Day – information on this popular annual fundraising event, sponsored by the Charleston Lake Environmental Association.

On the same flyer, on the reverse side, is a listing (and pricelist) of the various environmentally friendly products available for your home or cottage. These products are reasonably priced, and can help reduce pollution.

Events - Lake events for 2005

Information Inventory – a sheet listing all of the information pamphlets and flyers available at the Info Centre. A wealth of information is available that just can't be sent out with regular newsletters. Most is free for the taking, so drop in and take a look. Some back issues of our Newsletter are available at the Info Centre. Maps and books are also available at the Info Centre, at modest prices.

A brochure entitled Lake Trout Conservation Fishing Guide is included with this newsletter for your information.

Lifestyle and Phosphates

LIFESTYLE MAKES A DIFFERENCE TO PHOSPHORUS LOADING, the silent killer of rivers & lakes

RUSTIC	MODERATE	MANICURED
Human waste534 g	Human waste..... 534 g	Human waste 534 g
No dishwasher0 g	Dishwasher, liquid detergent..... 260 g	Dishwasher, powdered detergent..... 651 g
No fertilizer.....0 g	Fertilizer, once per year 981 g	Fertilizer twice per year..... 1962 g
Treed lot.....17 g	Cleared lot..... 29 g	Cleared lot..... 29 g
Phosphate-free household products0 g	Phosphate-containing household products= 180 g	Phosphate-containing household products 180 g
TOTAL.....551g	TOTAL..... 1984g	TOTAL..... 3356g

Source: MOE Dorset Research Centre

These phosphorus loads were calculated assuming that 3.7 people used the cottage for 89 days out of the year. The dishwasher did one load daily while they were there. It was assumed that the powdered detergent for dishwashers was 23% phosphate and the liquid detergent was 8% phosphate. The lawn (15 x 30m) was fertilized with 10-10-10 fertilizer at the recommended application rate of 0.05 kg per sq. m.

Other sources of phosphorus are bird and animal faeces including that of cattle, discharge of greywater from boats and homes, plus septic tanks that are poorly maintained and/or too close to the shore. Excess phosphorus nutrients mean excess growth resulting in overall poor water quality because of excess algae growth, oxygen depletion that suffocates the fish, and water that is truly unpleasant for swimming or boating. It becomes an obese lake and must be put on a strict diet.

To protect your lake from this nutrient obesity, reduce the phosphorus you put in your sewage system. Sewage systems, old and new, have limits on the amount of phospho-

rus they can capture and remove. On the Canadian Shield, the limited soil cover may not readily capture phosphorus. Also, as systems age and tile beds become saturated, phosphorus uptake diminishes and most nutrients eventually reach the lake. To minimize risk:

- Use phosphorus-free detergents for clothes and dishes. All detergents for automatic dishwashers contain from 4.5% to 18% phosphates so use as little as possible. These are available at the Biosphere Reserve Network Visitor Centre 19 Reynolds Rd (at the Parkway) 659-4824 and The Charleston Lake Associations Information

Centre, 109 CR 40 (Charleston Rd.) 924-0149

- Do not wash cars in the lake.
- Pump out your septic tank regularly.
- Use marina facilities to pump out sewage from pleasure boats.
- Avoid using fertilizer as it will definitely end up making the lake plants grow more.
- Enhance and maintain a natural, forested shoreline [of at least 10 m to 30 m] to increase nutrient uptake by shoreline plants and reduce erosion and nutrients leaching into the lake.
- Prevent surface runoff from your property into

the lake [by using wood chips for paths instead of concrete and leading eaves troughs to a back slope or a rain barrel].

Note: The label "biodegradable" on some detergents and products means only that the product will break down in the environment, not that it is non-toxic or non-polluting.

**FOR FURTHER INFORMATION:
contact the Ministry of Environment
at 1-800-565-4923.**

*Thanks to Bill Borger
for this article*

A bit of history...

The Outlet

The Outlet is situated at the south east end of Charleston Lake where the waters drain through Wiltse Creek eventually into the Gananoque River system. This is the only outlet on the whole of this spring-fed lake.

About 1835, Robert Webster built a saw mill on the south west shore of Wiltse Creek, Lot 14, Con.6 Front of Lansdowne. The area became known as Webster's Mills. Land registry records show he probably did not own the land. In 1851 he held a mortgage on the 200 acre property. It is transferred to his name in 1863 for 175 pounds. In the same year he sold the mill rights to Edwin R. Coleman for 250 pounds. At some point the mill was sold to James Greer and burned in 1885. Newspapers of the day reported it was to be rebuilt.

In 1858 a post office was opened with Robert Webster as post master. The postal address was Mount Webster, chosen because of its closeness to Blue Mountain, the center of logging at the time, and because the Websters were the most numerous families in the area. When the post office closed on the death of Robert Webster in 1871, it was receiving mail delivery three times a week. The post office reopened in 1892, renamed The Outlet, with James Greer as post master. He was replaced in 1905 by James Fodey who operated it until it was closed in 1931, one of the last community offices in the area to close. The Outlet post office

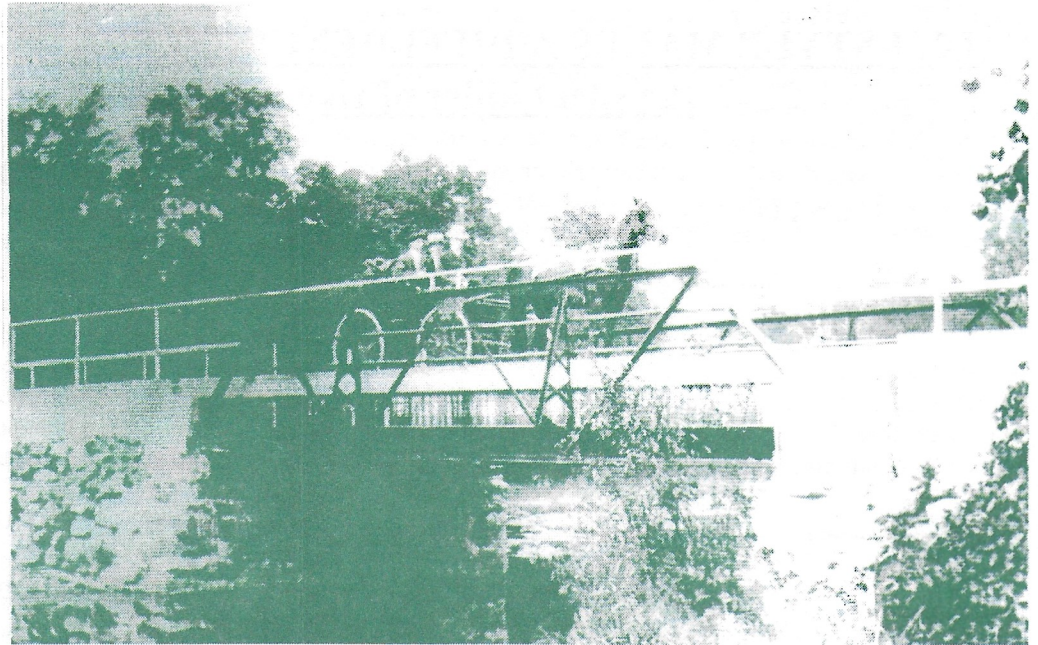


Photo courtesy of the LTI Historical Society

was located in the white house next to the bridge.

Thomas Kidd came from Ireland in 1822 and settled in what is today the south west area of the provincial park. In 1826, he was instrumental in the opening of the Kidd Road which started at the Front Road, now County Road #2, about a mile west of the turn to Lansdowne, and ran through the dense forest to Charleston Lake. This became a major route for moving between the areas. In 1831 his brother John joined him, buying Lots 17 and 18 in Con. 7, next to his brother's.

Charles and John McDonald, principal merchants at Gananoque, approached the Kidd brothers to establish a line of boats, and "to follow the Gananoque River to Marble Rock, then Wiltse Creek

to the Outlet, then make a dash through the unknown waters of Charleston Lake to Charleston" where there were supposed to be quantities of wheat and potash waiting. Capt. Kidd had two boats or bateaux, one ran from Gananoque to Marble Rock, where the goods was transferred to the second for the run to Charleston. This line ran for some years. There is some evidence that there was a tow path along parts of Wiltse Creek where horses would pull the boats. It was heavily used to float logs as well to Marble Rock.

In 1877 the first steam boat appeared on the lake, able to carry 20 passengers. James Greer built the Lily Nicholson at the Outlet in 1884, and was making regular 1 hour and 15 minute trips to Charleston on Saturdays, cost 25 cents. In 1888 he built a

larger boat, The Outlet Queen. This proved too large for the trade and too expensive to operate, and was sold to Kingston interests in 1891.

The Gananoque Water Power Company had purchased the water rites in 1875. In 1877 they bought land at the Outlet and built a new dam, raising the water 3 feet. This angered farmers whose land was flooded. A group of locals took action in 1878 and removed logs from the dam. The Power Company posted guards and brought in lumber to build a fort. In June they burned the pile of lumber intended for the fort. Charles R. Colton, an employee, was shot in the arm. The Power Company fenced the area and brought in 12 armed guards. A fort was built on the hill on the east side of the dam. It is believed the remains of this

(Continued on page 7)

Around the lake...

The Outlet - continued

(Continued from page 6)

fort was still standing in the 1920's. In November 1879 another dam was built. A year later the farmer's case went to court. Some of the farmers' claims left something to be desired. One said that his land was flooded so badly that his cows could no longer get down to the lake to drink! Judgement in the case came down in May 1883. Several farmers received a total of \$15,000. in compensation. The present dam was built about 1960.

While cottages started to appear on other parts of the lake as early as the 1890's. The first cottage at the Outlet was built on Greer's Point by James Greer, but deeded in

the names of his wife and daughter, Sarah M. and Faith, probably in the early 1900's. Other cottage development did not come until the 1930's, when Samuel Horton and William Vandenburg of the Outlet, along with others including Fred McConnell, Percy Earl and Jim Purvis opened up the area along "Burma Road". Now the shores are lined.

In 1913 the Pentecostal church under Rev. Clarence L. Cross established a campground on land donated by George Reed. At first meetings were held in a tent. Over the years a dining hall, kitchen and other buildings were erected. Individual sleeping cottages were built.

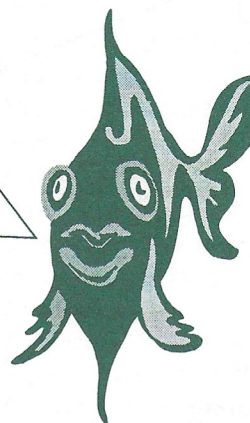
In the early 1950's a permanent Tabernacle was built on the site. The camp ground closed in 1977, the land was sold and became Charleston Heights Cottages.

The Outlet has been home to many interesting people over the years. Perhaps two of the most interesting characters were Mary Watson and Dinny Noonan. But that is a story for another time.

*Prepared by
Bill Boulton,
Communications Chair,
L.T.I. Historical Society*

A Message from the Charleston Lake fish:

- The future of our lake's fish resources is your responsibility.
- Please don't fish for bass during the spawning season... and encourage your friends to do the same.
- Practice selective live release fishing. Catch your limit... but limit your catch.
- Large adult bass and trout are an extremely important component of the spawning population.
- Pick up some brochures on the subject at the Associations' Information Centre, and help us provide grandchildren for your grandchildren.



Are you moving ?

**Make sure
your
Newsletter
moves with
you!**

Take a moment to provide us with your new address so that we can ensure uninterrupted delivery of your Association Newsletter.

**3 easy ways
to do it:**

Phone
613-924-1598

•
E-mail
ashwoods@rideau.net

•
Mail
CLA
P.O. Box 609
Athens, ON
K0E 1B0

Around the lake...

Gananoque Watershed

This springs rains played havoc with lake levels causing flooding and high water levels throughout the area. CLA Members have expressed concerns about the dam at outlet. The following is an explanation from Murray Hall (Fortis Power) how the entire watershed system works. Hopefully this will answer some of your questions. If you require more information please contact me (Bill Hallam) at (613) 535-2621 or at the cottage at (613) 659-2997.

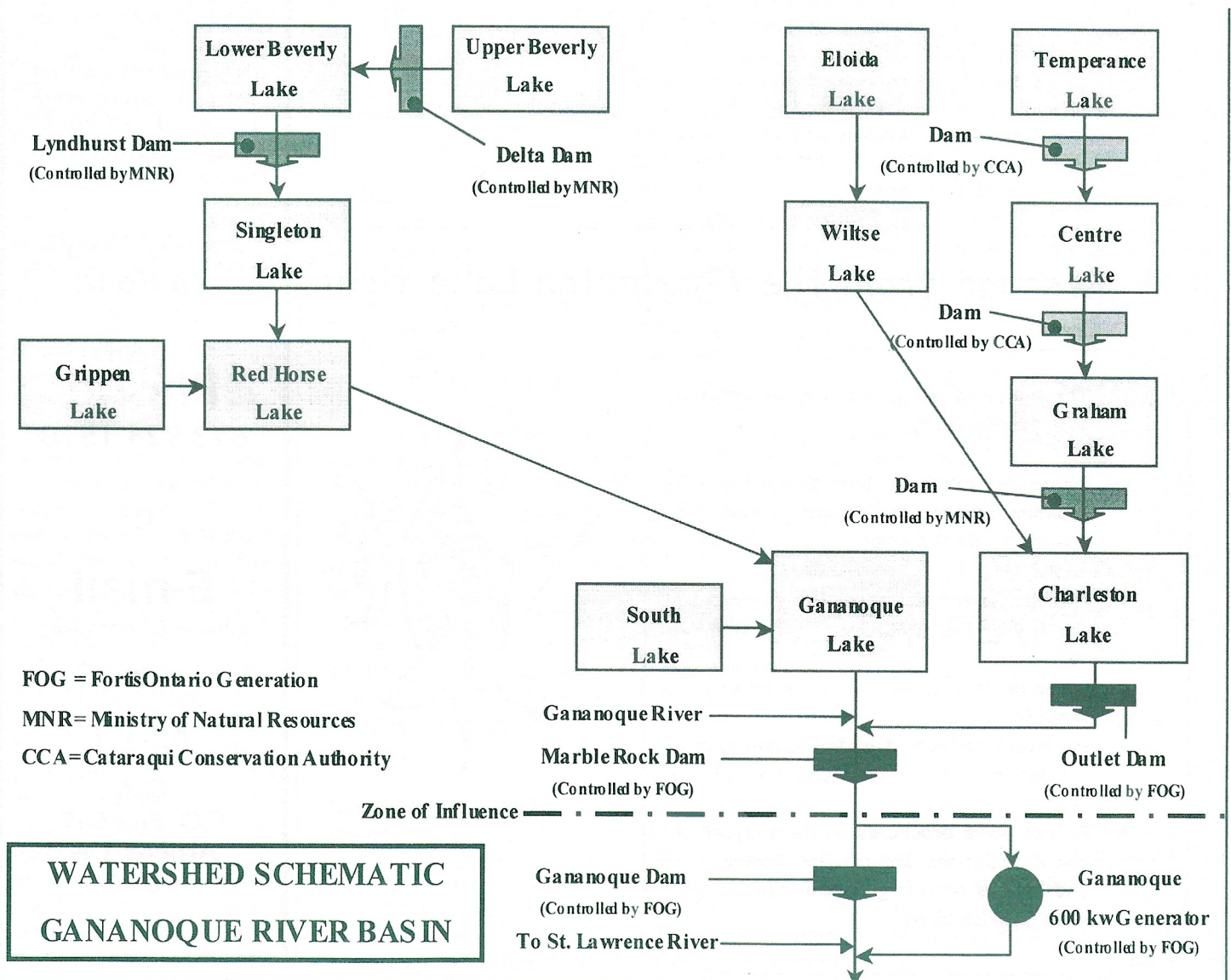
Gananoque Watershed Description

The Gananoque Watershed has a drainage area of 990 square kilometers and extends from the Town of Gananoque, an approximately 50 km. north. The watershed can be broken down into three main drainage areas of river systems. The northwest part of the watershed is the Beverly Lake system, consisting of a series of lakes and interconnecting channels. The eastern part of the watershed

consists of watercourses flowing into Charleston Lake and out through Wiltse Creek. These two river systems merge together just north of the Marble Rock dam and flow in a southerly direction to the Town of Gananoque and the St. Lawrence River. There are nine dams located within the watershed. The Beverly Lake system has two dams managed by the Ministry of Natural Resources, located in Delta and Lyndhurst vil-

lages. Three dams located on a series of lakes (Temperance, Centre and Graham). Temperance Lake dam and Centre Lake dam are managed by the Cataraqui Region Conservation Authority. Graham Lake dam and a secondary dam located on Leeders Creek are managed by the Ministry of Natural Resources, the water from these areas flow into Charleston Lake. Fortis Ontario Generation Corporation

(Continued on page 11)



For your information...

The property tax issue continues

March 28, 2005

Robert Runciman, MPP
243 Perth St.,
Brockville, ON K6V 5E7

Dear Mr. Runciman:

I am writing on behalf of our membership of approximately 700 to ask your support in changing what has become a serious concern for all of us.

I am referring to the increasingly inequitable transfer of the property tax burden to owners of waterfront property. This results from the increasing market value of that property and the Market Value Assessment system of valuation adopted by the province in the early nineties.

This system, when introduced, did not contemplate the market situation we face. The waterfront market has shown rises of 20 to 40% in a year. While this may indeed be true it bears no relationship to that waterfront properties share in the services provided by the taxes assessed on those values. Only a small number of these properties are sold in a given year and these sale prices are used to establish new values for the entire community. It is also important to point out that unlike urban properties where neighbouring houses often have similar values thus making comparisons valid; this is not typical of waterfront properties.

To illustrate the magnitude of this please note the following:

MUNICIPALITY	WATERFRONT PROPERTY		NON WATERFRONT	
	# units	% MVA Increase	# units	%MVA Increase
Athens Twp.	267	39.6	1103	13.1
Leeds & 1000 Islands	2914	34.8	2940	23.6

Information taken from MPAC 2004 records.

The system as it is now constructed permits municipalities to increase tax revenue without raising mill rates; and to do so at the expense of those least benefiting by those revenues.

It cannot be argued that the ability to pay taxes is proportionate to the market value. The only time market value is truly established for waterfront properties is at the time of the sale. Most properties in this category are not sold but passed from generation to generation, even then attracting other taxes.

It is sad but true that because of this grossly inequitable taxation some of these properties are being forced onto the market thereby further exacerbating the problem.

The pressure from our membership to do something about this problem is steadily increasing. I would appreciate the opportunity to meet with you, at your convenience, to discuss alternatives and agree on a course of future action.

Your truly,

Don Curry
PRESIDENT
Charleston Lake Association

Around the lake...

Charleston Lake - on the world stage

This article is based upon an earlier version of an article that first appeared in Charleston Lake Provincial Park's 2004 tabloid newspaper. Permission to use this article was given by Charleston Lake Provincial Park staff.

People who have been coming to Charleston Lake Provincial Park all know what a beautiful and special place it truly is. And now so does the world, so to speak. In November of 2002, the United Nations Educational, Scientific, and Cultural Organization (UNESCO) declared the surrounding area as Canada's twelfth biosphere reserve, and only the third such reserve in Ontario. Biosphere reserves are areas of ecosystems which are internationally recognized for promoting a balanced relationship between people and nature.

The new biosphere reserve, of which Charleston Lake Provincial Park is a part of, is officially called the **Thousand Islands-Frontenac Arch Biosphere Reserve** (also referred to as the *Frontenac Arch Biosphere*). This official name may be a mouthful, but it reflects the varied and diverse landscapes contained within its boundaries.

Many people may be familiar with the famous and scenic Thousand Islands area of the St. Lawrence River, but equally fascinating and picturesque is the Frontenac Arch (also referred to as the

Frontenac Axis), an ancient, finger-like geological formation that connects the vast, rocky Canadian Shield of central and northern Ontario, to the Adirondack Mountains of New York State.

The new Thousand Islands-Frontenac Arch Biosphere Reserve lies roughly in a triangular area, stretching along the St. Lawrence River from Gananoque to Brockville, and north to Westport, covering an area of about 1500 square kilometres and with a human population of about 50,000 people. Charleston Lake Provincial Park is situated in the centre of this reserve.

The Biosphere Reserve region is known for its high level of biological diversity, including nationally and provincially significant plants and animals such as the Red-shouldered Hawk, Southern Flying Squirrel, Pitch Pine, and the Black Ratsnake, all of which are found within Charleston Lake Provincial Park. About 90 percent of the Pitch Pine trees in Canada are located within the Biosphere Reserve, while almost all of Canada's Black Ratsnakes are found within the reserve. The Biosphere Reserve region is also about 50 percent forested, while about half of the original wetlands are still intact.

In addition to being geographically situated in the centre of the Biosphere Reserve, Charleston Lake Provincial Park is also the largest core protected area within the

reserve. Some people have claimed the park is the *crown jewel* of the Biosphere Reserve! The other protected core area is St. Lawrence Islands National Park, located along the St. Lawrence River near Mallorytown, Ontario. The Biosphere Reserve also encompasses recreation and historic sites (St. Lawrence Parks Commission lands, Rideau Canal National Historic Site), land trust holdings of the Canadian Thousand Islands Heritage Conservancy, conservation lands of the Catarqui and the Rideau Valley Conservation Authorities, provincial Crown Lands, and the Queen's University Biological Station.

The biosphere designation is completely non-regulatory and in no way governs any planning or activity. That is why core protected areas such as Charleston Lake Provincial Park are important, particularly in terms of the conservation and protection of flora and fauna. The park

is governed by the Ontario Provincial Parks Act, bestowing it with the highest level of legislative protection of provincial lands, which is especially important for protecting nationally and provincially significant plants and animals. Administration for the Biosphere Reserve is provided by the Board of the Biosphere Network, a community-based group, based out of the *The Watershed* office, located on the Thousands Islands Parkway at Reynolds Road.

It is truly an international honour for the region to be recognized as a United Nations Biosphere Reserve. Enjoy your visit to this diverse and internationally recognized area!

For more information on the Thousand Islands-Frontenac Arch Biosphere Reserve, visit www.biospherenetwork.com on the internet.

Upcoming Charleston Lake Events

**Annual General Meeting -
9:30 a.m., Saturday July 9, 2005,**

**Holy Trinity Church
See Page 12 for details**

**See also Event Calendar on the insert sheet
accompanying this newsletter.**

Around the lake...

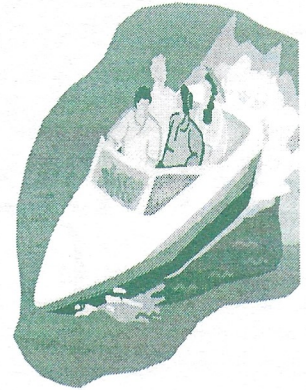
Gananoque Watershed - contd.

manages and operates three dams, the Outlet Dam, Marble Dam and the Gananoque Dam. The Outlet dam is located at the outlet of Charleston Lake and the Marble Rock Dam is located on the Gananoque River south of the point where Wiltse Creek joins the river from Gananoque Lake and Beverly Lakes. The Gananoque dam is located in the Town Of Gananoque. The primary function of these dams, are to manage water levels for fish and wildlife values, recreation, navigation and flood control. The Gananoque Dam also regulates levels for hydropower generation, and directs water into the generating canal. Areas of concern during high flows on this watershed are Delta, Singleton

Lake area, these are mostly due to bottlenecks or narrow areas where water will back up. There is only three feet elevation drop from the Outlet Dam to Marble Rock Dam, this causes very limited flow from Charleston Lake when watershed is to the maximum levels. Other areas of concern are the narrows at highway #401 and the C.N Bridge area that reduces the amount of water to pass through these narrows before it reaches the Gananoque dam. Please refer to figure 1 for the watershed schematic.

*Murray Hall
Supervisor
Facilities Maintenance,
FortisOntario
Generation Corporation*

***The boating
season is
always
special!***



***Please don't
spoil it by
drinking and driving.***

Have a safe and enjoyable summer.

Safety Committee

A letter of thanks...

CHARLESTON LAKE ASSOCIATION
April 19, 2005

Mayor Herb Scott and Council
Township of Athens

The Charleston Lake Association wishes to thank you for the new, very attractive sign, denoting the Village Of Charleston.

The 'Protect Our Lake' message on the sign is noted and appreciated. I know it reflects Councils commitment to keep Charleston Lake beautiful in every way.

Yours truly,

Don Curry
President
Charleston Lake Association.



The Charleston Lake
Associations
**Information
Centre**

is now open

109 County Rd. 40 (Charleston Rd.)

Tel: 613-924-0149

Hours of Operation:

May, June:

Saturday, 12 noon to 4 pm.

July & August:

Wednesday through Saturday, 10 am to 4 pm.

Sunday 10 am. To 12 noon



For your information...



Notice of Annual General Meeting

Saturday, July 9, 9:30 a.m.

Holy Trinity Church

Holy Trinity Road

(Between Lower and Upper Oak Leaf Roads)

AGENDA

- Minutes of last meeting
- President's Report
- Treasurer's Report
- Guest Speaker
- Election of Directors
- New Business
- Adjournment

Guest Speaker

Negotiations for our Guest Speaker were not finalized by press time. Watch for an announcement, or stop in to the Information Centre.

Come early for refreshments.

We look forward to seeing you at the meeting.

The Directors, Charleston Lake Association